



**CO-€**

**PRODUCT  
CATALOG**

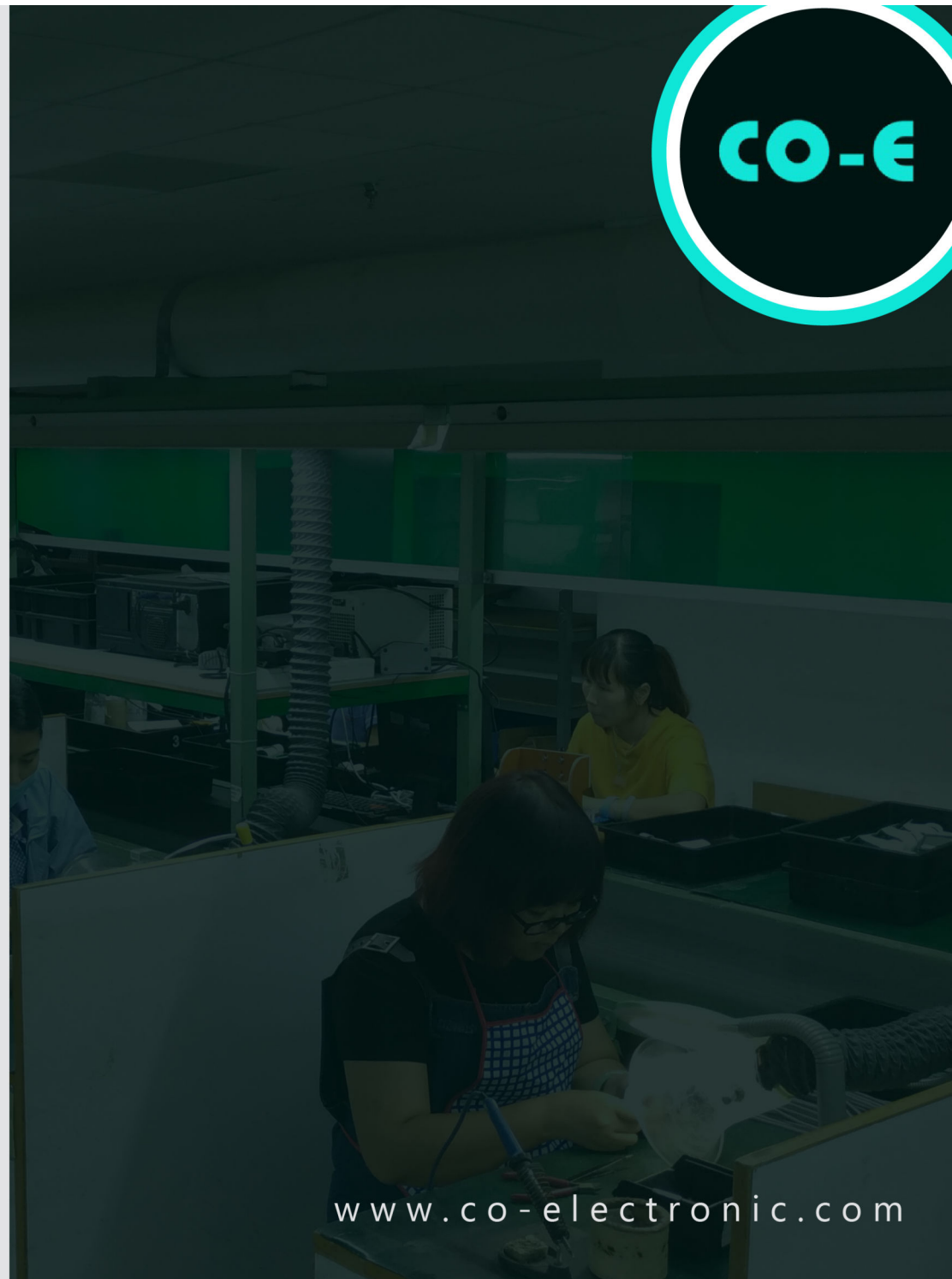
[www.co-electronic.com](http://www.co-electronic.com)

## ABOUT **CO-ELECTRONIC COMPANY**

CO-Electronic Company Limited was established in Hong Kong in 1979 with the aim to provide manufacturing services to local and overseas customers. We started with the making of digital watches and hand held games. In 1982, we switched to the manufacturing of ferrite core transformers for the use in switching mode power supplies, ballasts, modems and various other applications. In 1985, we started to provide PCB assembling and complete OEM products manufacturing services.

In 1992, we set up another plant in Zhongshan of Mainland China. With continuous growth, we relocated our factory to the current site in 2005. We have obtained the ISO certificate since 1999 and we keep updating our management system to fulfill the criteria of latest version of ISO. Therefore, we were certified for ISO9001:2015 last year.

We have over 30 years of experience providing PCB Assembles and complete OEM products manufacturing services. We have over 400 employees in our production plant. The factory is over 12600 meter square. With our expertise and the capacity of our factory, we provide top tier one stop service which makes our customer highly satisfy.



[www.co-electronic.com](http://www.co-electronic.com)





# STANDARD TRANSFORMERS

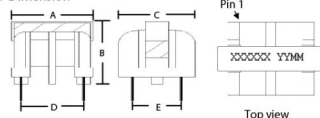
## \* UU Series Common Mode Coil Specification

### I. Bill of Material

	UU10 Series	UU16 Series	UL# / Safety
Core	Ferrite, UU10.0	Ferrite, UU16 R7K	--
Bobbin	Phenolic 94V0, UU10.0	Phenolic HY1507, Chang Chun T375J	E59481(S)E192738
Flux	AHQ-3100MT-2		--
Wire	MW79		E164409
Tape	Propylene flame retardant tape, Jingjiang Yahua P2series		E165111
Varnish	BC-346A		--
Solder	Sn-3.0Cu		--
Clip	UU10.0 / SUS-301	UU15.7 / SUS-301	--



### II. Dimension



Series	A	B	C	D	E
UU10	15.5	16.0	11.5	8.0	7.0
UU16	22.0	27.0	19.0	13.5	10.0
Tolerance	1.0	1.0	1.0	0.5	0.5

### IV. Electrical Specifications

Series	Model	Inductance 10KHZ/1V AG-4303 Meter	Resistance @25C	Wire Gauge (mm)	Current Rating	
UU10	CX-106300	30mH	800 mohm	0.3	0.6A	
		30mH	800 mohm	0.3	0.6A	
	CX-100120	12mH	275 mohm	0.4	1A	
		12mH	275 mohm	0.4	1A	
	CX-106050	5mH	106 mohm	0.5	1.6A	
		5mH	106 mohm	0.5	1.6A	
	CX-105030	2.5mH	51 mohm	0.6	2.5A	
		2.5mH	51 mohm	0.6	2.5A	
	CX-105010	1.3mH	29 mohm	0.7	3.5A	
		1.3mH	29 mohm	0.7	3.5A	
UU16	CX-100010	0.9mH	21 mohm	0.8	4A	
		0.9mH	21 mohm	0.8	4A	
	CX-166560	56mH	11 ohm	0.3	0.6A	
		56mH	11 ohm	0.3	0.6A	
	CX-160250	25mH	5 ohm	0.4	1A	
		25mH	5 ohm	0.4	1A	
	CX-166110	11mH	3 ohm	0.5	1.6A	
		11mH	3 ohm	0.5	1.6A	
	CX-165060	6mH	1.8 ohm	0.6	2.5A	
		6mH	1.8 ohm	0.6	2.5A	
UU16	CX-165030	2.5mH	1 ohm	0.7	3.5A	
		2.5mH	1 ohm	0.7	3.5A	
	CX-160020	1.5mH	0.6 ohm	0.8	4A	
		1.5mH	0.6 ohm	0.8	4A	
	Tolerance		30%	Max	5%	---

CO-Electronic Co. Ltd.  
Hong Kong

[www.co-electronic.com](http://www.co-electronic.com)

UU Series Common  
Mode Coil Specification

Dimension unit : mm  
Scale : not in scale  
Rev 0. Date : 28 Sep., 18 1/2

### V. Marking information

XXXXXX YYMM XXXXXX: digits of model no.  
YY: Year  
MM: Month

### VI. Dielectric Strength

T1	T2	1800VAC, 2Sec
----	----	---------------

### VII. Insulation Resistance

Not less than 100 MΩ @500VDC between the test points of the dielectric strength test, and measured immediately after each dielectric strength test.

### VIII. General Information

Soldering: 255±5C, 5 seconds maximum  
Working: 20 to 120C, 30% to 90% R.H.  
Storage: 20 to 80C, <75% R.H.

CO-Electronic Co. Ltd.  
Hong Kong

[www.co-electronic.com](http://www.co-electronic.com)

UU Series Common  
Mode Coil Specification

Dimension unit : mm  
Scale : not in scale  
Rev. 0 Date : 28 Sep., 18 2/2





# PLASTIC INJECTION EQUIPMENT



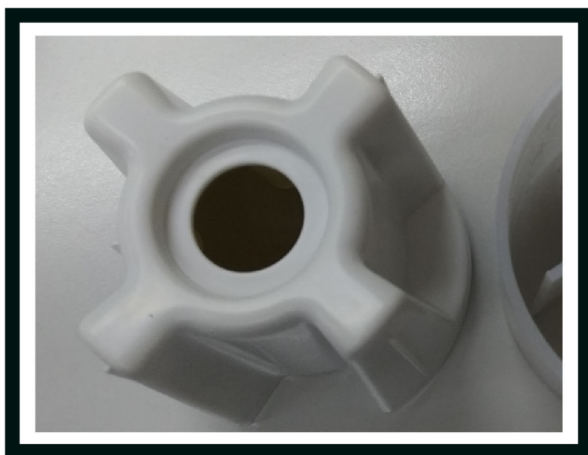
1x Plastic Pipe Extrusion Machine

4x Vertical Injection Molding Machine (15-30 Tons)

18x Horizontal Injection Molding Machine (90-470 Tons)

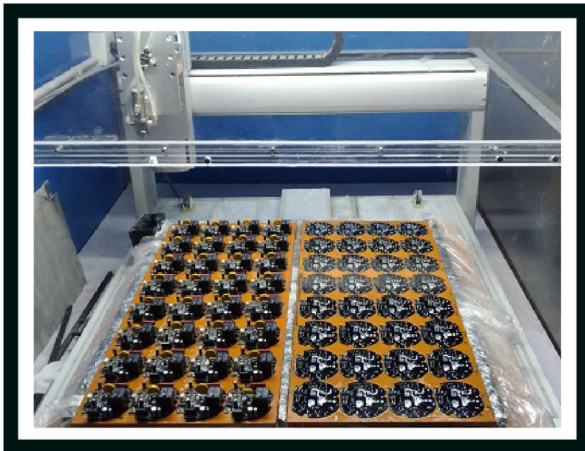


# PLASTIC PARTS SHOW CASE

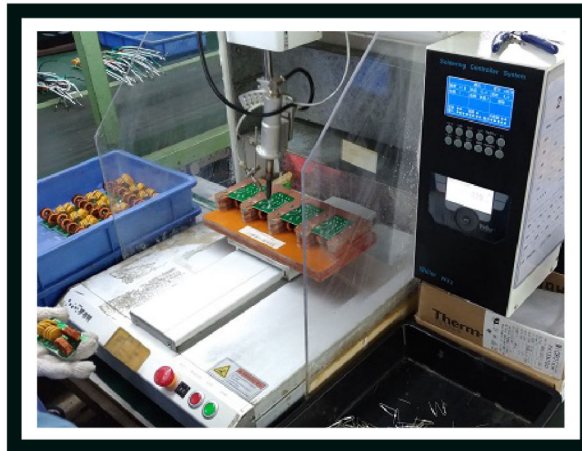




# AUTOMATION EQUIPMENT



**AUTOMATIC CONFORMAL COATING**



**SOLDERING ROBOT**



**SMT WORKSHOP**

# TESTING



**AUTOMATION OPTICAL  
INSPECTION**

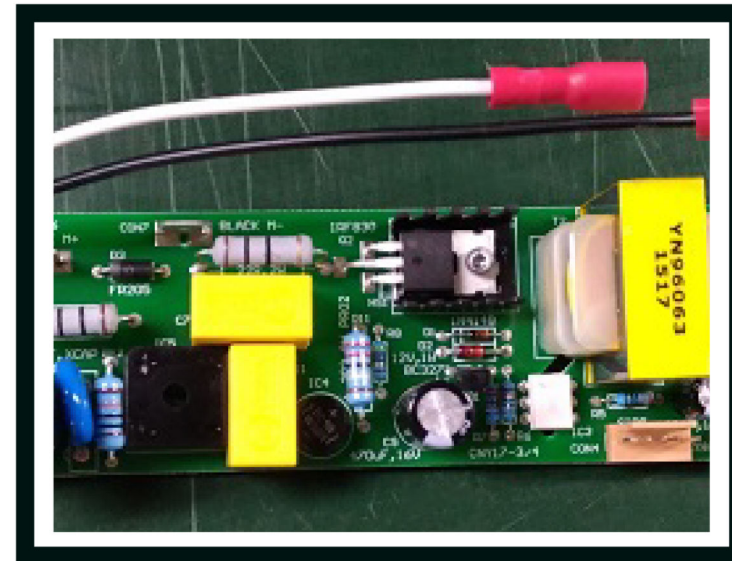
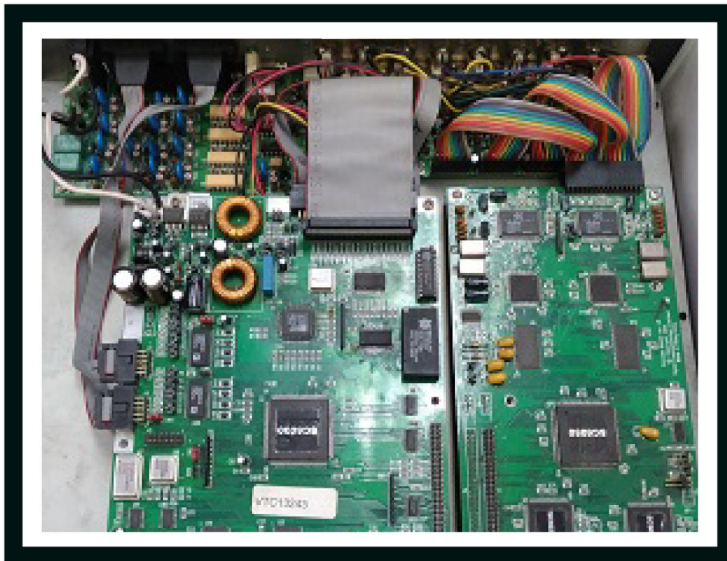


**IN CIRCUIT TEST**

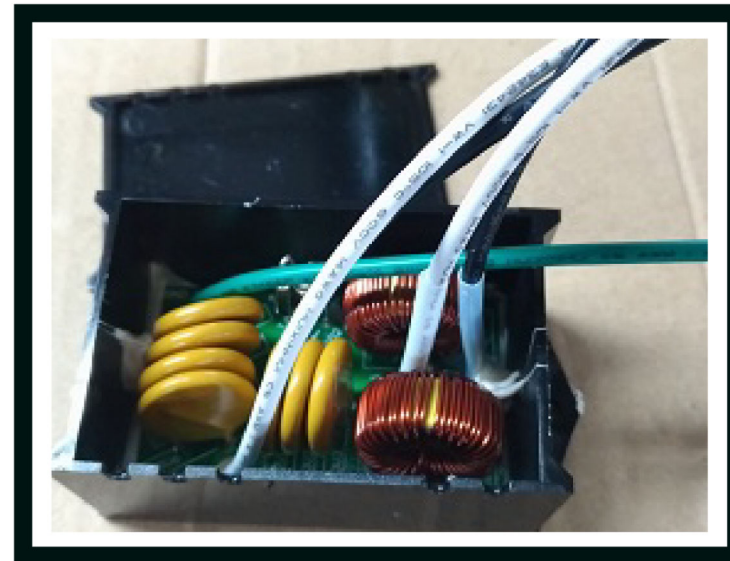
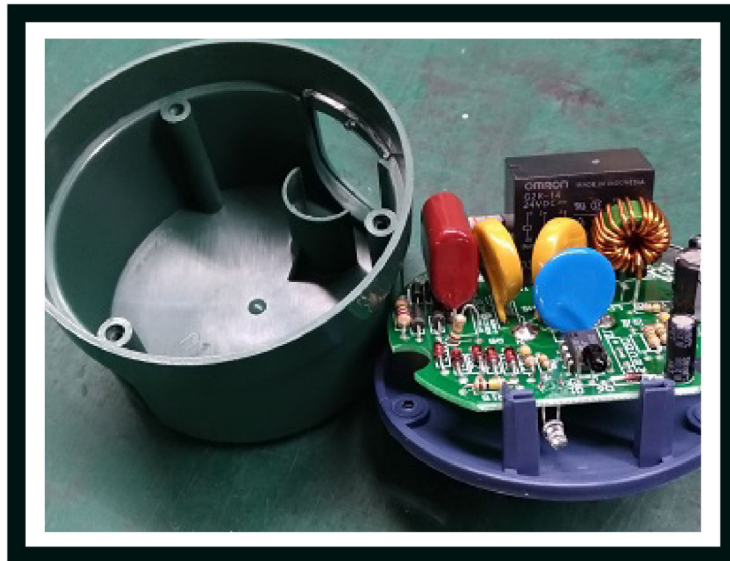


# PCBA SHOW CASE

CO-E



# COMPLETE ELECTRONIC PRODUCT SHOW CASE



Plastic Parts that Made in CO-E

PCBA in CO-E

Coils made in CO-E

**Tel : (852) 2793 3633**

**Fax : (852) 2343 7590**

**Email: [jackylai@co-electronic.com](mailto:jackylai@co-electronic.com)**

**Address: Flat 1, 13/F, Wah Hung Centre,  
41 Hung To Road, Kwun Tong,  
Kowloon, Hong Kong**

**URL: <http://www.co-electronic.com>**

The logo consists of the text "CO-E" in a bold, white, sans-serif font, centered within a dark teal circle. This circle is part of a larger graphic element that includes a thick teal line forming a stylized 'V' or arrow shape pointing towards the bottom right, and a white diagonal line intersecting it.

**CO-E**

[www.co-electronic.com](http://www.co-electronic.com)